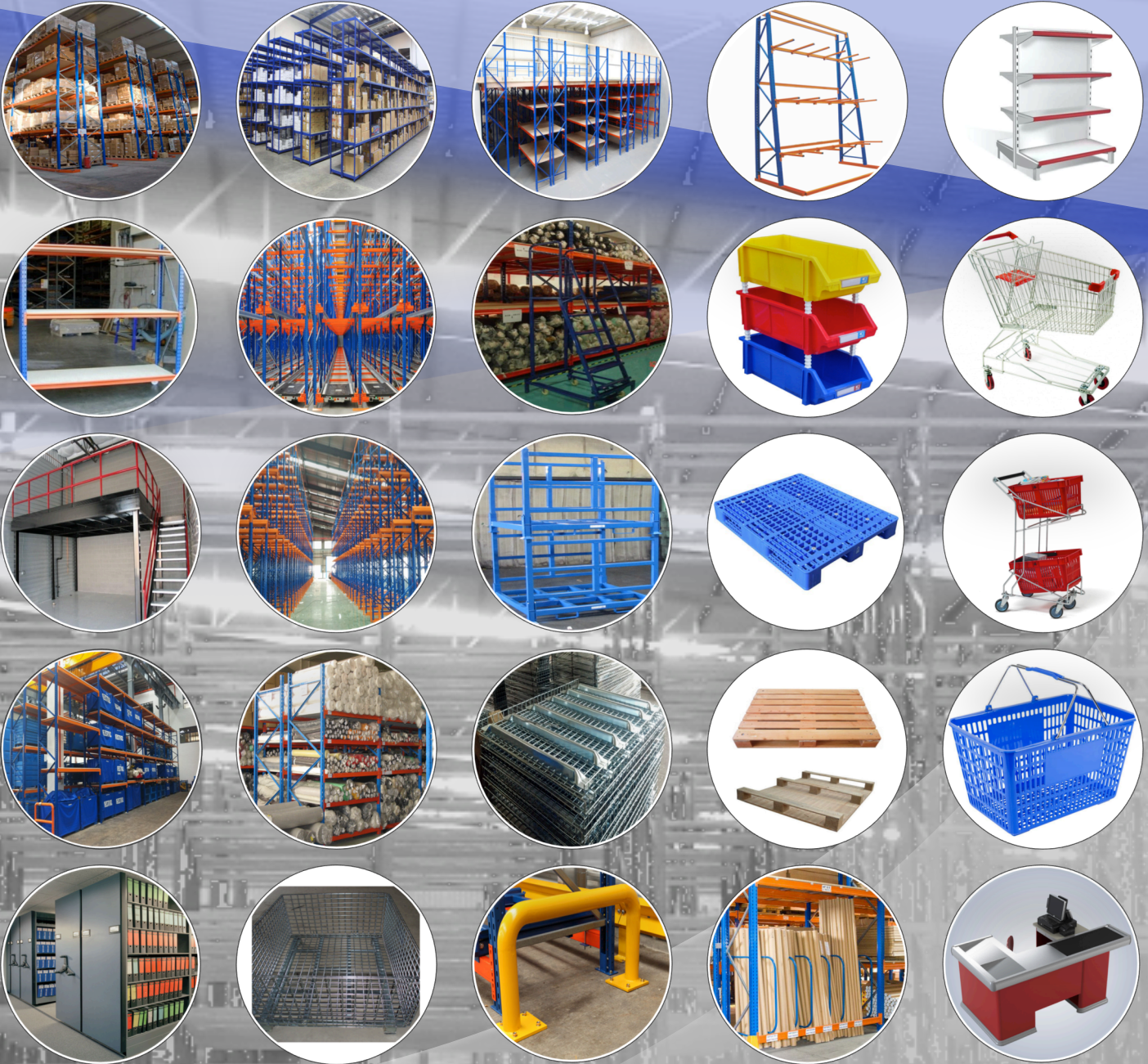


Storage problem? Let us help you, with free estimate.



Contact us at: (02) 7-585-4800, 0917-1908383, 0933-5033797

Or email us at: wepartner@imisteelstorage.com.ph

Also visit our website: www.imisteelstorage.com.ph

And, for more variety of premium products, lets talk!

>>> **CONTENTS**

ABOUT US	03
SELECTIVE RACKING SYSTEM	04
DOUBLE-DEEP RACKING SYSTEM	04
VNA RACKING SYSTEM	05
DRIVE-IN/DRIVE-THRU RACKING SYSTEM	05
RADIO SHUTTLE RACKING SYSTEM	06
MOBILE SHELVING/RACKING SYSTEM	06
PUSH BACK/PALLET FLOW RACKING SYSTEM	07
CARTON FLOW RACKING SYSTEM	07
STACKABLE STEEL PALLET SYSTEM	08
LONGSPAN RACKING SYSTEM	08
CANTILEVER RACKING SYTEM	09
MEZZANINE RACKING SUPPORTED SYSTEM	09
MEZZANINE STRUCTURAL SUPPORTED SYSTEM	10
LIGHT DUTY SHELVING SYSTEM	10
CUSTOMIZE STEELWORKS	11
GONDOLA/SUPERMARKET SHELVING SYSTEM	12
OTHER SUPERMARKET OR CONVENIENCE STORE USED PRODUCTS	12
<i>(SUCH AS CASHEIR COUNTER, SHOPPING BASKET, SHOPPING TROLLEY AND BASKET TROLLETY)</i>	
OTHER WAREHOUSE STORAGE USED PRODUCTS	13
<i>(LIKE WIRE CAGE OR WIRE CONTAINER, PLASTIC BINS AND PALLETS)</i>	
OTHER SERVICES	14
<i>(RACKING INSPECTION, INSTALLATION, DISMANTLING, REPAIR AND AFTER SALES SERVICES)</i>	



ABOUT US

IMISTEEL STORAGE RACK TRADING is your **reliable** and **trustworthy partner** in warehouse storage racking shelving system, and it is established in desire to:

- 1) Provide exceptional and systematic storage solutions to maximize the efficiency of client available space.
- 2) Provide jobs in the industry, and opportunity for the people we hire to improve their lives and their family's lives.
- 3) Help the community in any way possible, and set us an example to other entity to help as well.

VISION

1. IMISTEEL STORAGE RACK TRADING envision of becoming the **most trusted partner** in providing racking and products in warehouse storage industry, both nationally and internationally.
2. IMISTEEL STORAGE RACK TRADING envision of becoming a **one stop shop** for all buyers wherein they can choose products from different, if not all, manufacturers in the racking and warehouse storage industry.

MISSION

For our clients

To have a long terms trustworthy partnerships. Help the client the most possible way we can, providing them useful and efficient information regarding in the industry, supplying them products with premium quality, safe and cost efficient, and with a continuing after sales services.

For our Employees and People work for the company

To have a long terms trustworthy partnership. Providing them healthy working environment wherein they can improve their work ethics and extend their capabilities to its optimum. And, help them improve their lives financially and socially, and hoping in this way they can provide better lives for their family.

For the community

Show the value of trustworthy partnership to every person or entity that we might get the chance to touch they're lives along the way. As a way of giving back, the company, its employees and all the people behind it will exert our wholehearted efforts to help whomever that might in need the best way we can.

THE TEAM

IMI is lead by people with over 10 years of experienced in the racking and storage industry. Their **technical knowhow** and **expertise** enables to provide a wide range of tips and technique for designing a total storage system in a specific warehouse storage environment (*for Normal Temperature and Cold Storage*).

Our team has a dedicated staff and technically knowledgeable in their respective duties to cater client needs in the industry of racking and products in warehouse storage industry. Our team consists of the following work areas:

- Commercial Team
- Technical/Inspection Team
- Assembly/Dis-assembly Team

IMISTEEL STORAGE RACK TRADING is confident that we can fulfill our customer needs and requirements, and assured them for premium quality products, properly engineered, budget prices, efficient and timely distributions, safe serviceability and continuing after sales service.

VALUES

Our values as guide for the company and its people:

- Faith: Believe in God, and it's will.
- Partnership: We deal with trust.
- Integrity: Be real, and honor words.
- Teamwork: We are one.
- Quality: Provided with factor of safety.
- We care: Extend hands to needy.

SELECTIVE RACKING SYSTEM (UP TO HEAVY DUTY)



The most widely used racking system for storing palletized loads. The racking system can be placed against the wall (single deep only), and rows of back-to-back on succeeding floor spaces after the wall.

Client Guide:

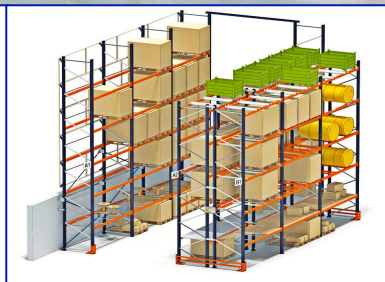
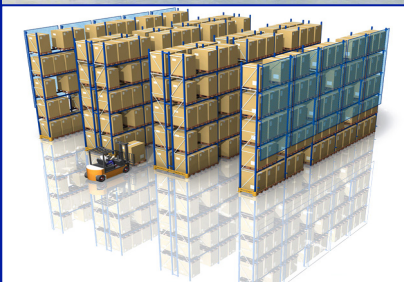
- Suite for low turnover volume and differentiation product lines
- Suite for short life Stock Keeping Units (SKU's), First-In-First-Out
- In terms of operation and cost efficiency, not suitable for high volume storage greater than 3,000 pallets

Advantages:

- Least expensive among all the pallet racking systems
- Ideal for fast moving operation (immediate access to every pallet load)
- 100% pallet selectivity
- Racking load height can exceed 12.0m
- Load capacity per pallet can go as high as 2.5 tons
- First pallet level can rest on ground floor (save cost for bottom beam)

Aisle Requirement:

- Counter Balance Forklifts, minimum of 3.8 meters
- Reach Truck, minimum of 2.8 meters



DOUBLE-DEEP RACKING SYSTEM (UP TO HEAVY DUTY)



A derivative of Selective Racking System but pallets is now stored two rows deep instead of one. Loading and unloading is done thru the use of special forklifts with forward reach ability (able to extend its fork) to work for the second-row-pallet.

The racking can be placed against the wall (double deep), and two rows back-to-back on succeeding floor spaces after the wall.

Client Guide:

- Suite for stocks that has medium to long-term shelf life

Advantages:

- Up to 40% more storage capacity than Selective Racking System
- 50% pallet selectivity
- Racking load height can reach 12.0 meters (or more)
- Load capacity per pallet can go as high as 1.5 tons

Aisle Requirement:

- Counter Balance Forklifts, minimum of 3.8 meters
- Reach Truck, minimum of 3.0 meters



VNA RACKING SYSTEM (VERY NARROW AISLE, UP TO HEAVY DUTY)



A racking system almost similar to Selective Racking System, only that the aisle can be reduced to 1.8 meters. This racking system requires a specialized material handling equipment to load and unload the racks. Since the aisles is narrow, guiderails or electronic guidance systems can be fitted to assist the material handling equipment and protect the structural integrity of the racking.



Client Guide:

- Suite for high warehouse storage, racking height up to 16.0 meters

Advantages:

- Provides high density of storage by reducing aisle space to minimum
- 100% of accessibility to control total stocks
- Load capacity per pallet can go as high as 1 ton at 16.0 meters high (can go up to 1.5 tons per pallet at lower level)

Aisle Requirement:

- Turret Trucks, minimum aisle of 1.6 meters

DRIVE -IN/DRIVE-THRU RACKING SYSTEM (UP TO HEAVY DUTY)



Client Guide:

- Suite if you have products that need cold/freezer type storage in order to store more products since its operation is expensive
- Best option for large amounts of similar products at limited space
- *Drive-In Racking System:* This system is perfect for products that are not date sensitive (*Last In, First Out* inventory system)
- *Drive-Thru Racking System:* Perfect for date sensitive products (*First In, first Out*)

Advantages:

- Provides high density of storage by reducing the number of working aisle
- Three times more storage than the traditional pallet racks
- Load capacity per pallet can go as high as 2 tons

Aisle Requirement:

- Counter Balance Forklifts, minimum of 3.8 meters
- Reach Truck, minimum of 2.8 meters

A most preferred racking solution to conventional block stacking where pallets simply can't be stacked on top of each other. The system involves the forklift entering the racking from one side to load or retrieve the pallets, which are stored more deeply.



RADIO SHUTTLE RACKING SYSTEM (UP TO HEAVY DUTY)



Client Guide:

- Perfect for cold storage, food and beverage industry by limiting human intervention

Advantages:

- Efficient and high accuracy in loading and unloading
- Less forklift damage to racks since forklift does not enter inside the racking
- Load capacity per pallet can go as high as 1.5 tons

Radio Shuttle Racking System is a semi-automated high-density storage system, which uses an automatic device to move in back and forth products transportation, and forklift pick-up at the end.

MOBILE SHELVING/RACKING SYSTEM

Unlike static shelving or racking that rest on the floor, this system is placed on mobile carriages, which are then attached to floor tracks. This allows the systems to compact together when not in use, eliminating all but one or two aisles standardly in between each row of the system.

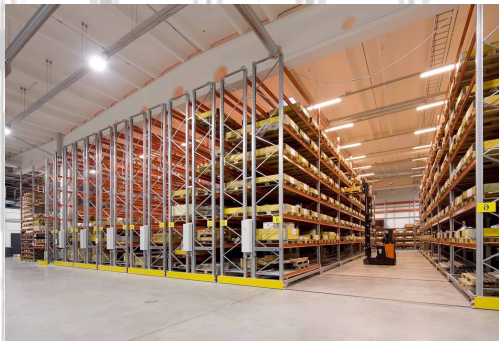
Client Guide:

- For premium facility with lot of product and supplies which need to be stored, easily accessible and secured
- Best option for storing a large amount of products in a limited area of storage

Advantages:

- Provides high density of storage by limiting the number of working aisle
- 100% of accessibility
- 0.3 -1 .5 tons load capacity
- Save around 50% storage space

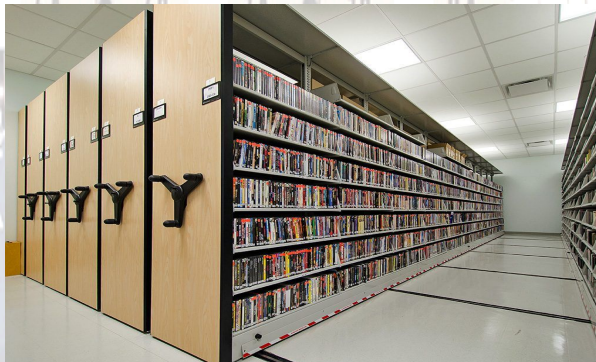
A. HEAVY DUTY (MOBILE RACKING SYSTEM)



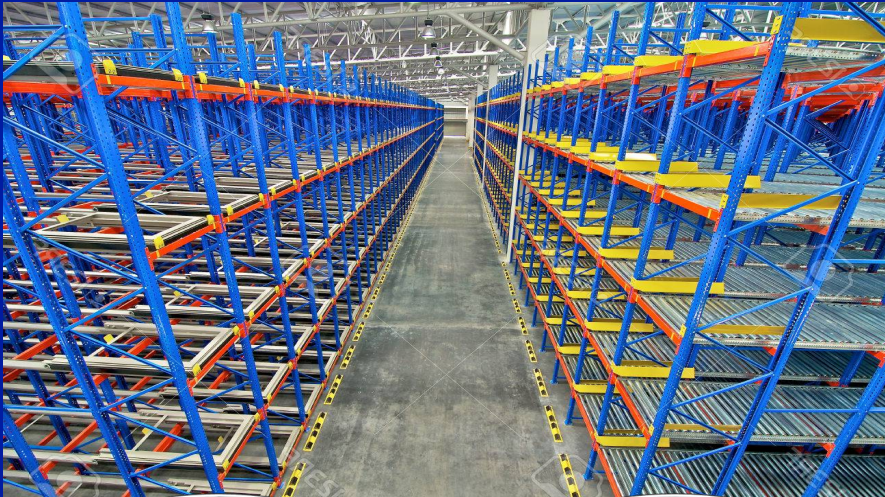
B. LIGHT DUTY (MOBILE SHELVING)

Aisle Requirement:

- Mobile Racking: Counter Balance Forklifts, minimum of 3.8 meters
- Mobile Racking: Reach Truck, minimum of 2.8 meters



PUSH-BACK/PALLET FLOW RACKING SYSTEM (UP TO HEAVY DUTY)



A gravity flow rack that are designed to utilize the natural force of gravity to move the pallet load into picking position so it can be accessed by the forklift operator.

Client Guide:

Push Back

- Ideal for products that are not date sensitive (*Last In, First Out* inventory system)
- Larger number of SKU's can be efficiently stored

Pallet Flow

- Ideal for fast moving with First In, First Out stock rotation
- Ideal for date sensitive inventory
- Ideal for full case picking

Advantages:

- Quick, immediate access to every product
- High density storage utilizes warehouse space with fewer aisles
- Average load capacity per pallet 1 ton

Racking Pallet Deep:

Push Back

- Can able to store up to 6-deep of pallets

Pallet Flow

- Can able to store up to 20-deep of pallets



PUSH BACK



PALLET FLOW

CARTON FLOW RACKING SYSTEM (LIGHT TO HEAVY DUTY)

It is a gravity-powered racking system where the racks are sloped and aided by rollers or wheels. The loading aisle is in the back while the picking aisle is up front. Unlike Pallet Flow Racking System, the products are place in cartons instead of pallets and slide on a rollers to move forward on the picking aisle.

Client Guide:

- Work well for warehouses with products of varying kinds and sizes
- Efficient for full case picking or split case picking

Advantages:

- Increases labor efficiency
- High density storage, less floor space is used
- Ideal for fast moving with First In, First Out stock rotation
- Load capacity per level can go as high as 1 ton



STACKABLE PALLET STEEL SYSTEM (FIXED OR FOLDABLE)



Basically it's a reinforced steel pallet that can be stackable up to 5 high, and the bottom pallet or the base is design to carry load all the way from top pallet.

Client Guide:

- If wanted to multiply floor stacking and pile up pallet loads by not using permanent/fixed conventional racking
- A pallet stackable system that can be easily knock down and nested if not in use

Advantages:

- Most flexible industrial storage
- Save floor space by utilizing air space without using conventional racks
- Maximize floor space by bulk storage without damaging your goods
- 0.5 ton to 1 ton load capacity per pallet stacked

LONGSPAN RACKING SYSTEM (MEDIUM TO HEAVY DUTY)

It is a storage system for manual picking of products that follow the "man-to-product" principle. It is designed for warehouse where goods are deposited and removed manually from shelves. This system also makes optimal use of warehouse height.

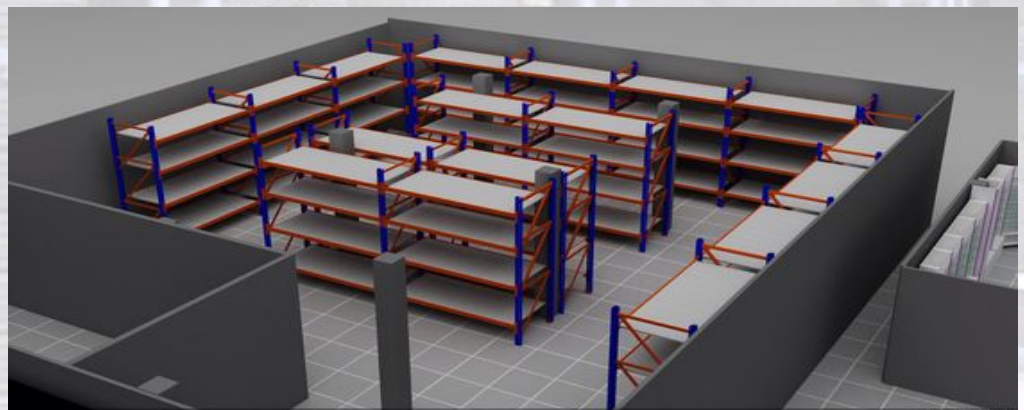


Client Guide:

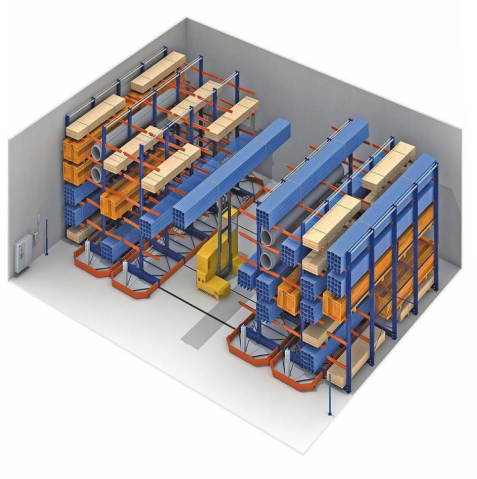
- For manual loading and unloading
- Advisable for office storage and low level warehouses

Advantages:

- Cost efficient, high storage due to minimal aisle width
- Load capacity ranging from 300 kg to 2000 kg per level
- Can maximize storage height with the use of ladder for high level racking
- Pallet is not necessarily needed, instead use plywood, steel or wire mesh for shelf floor



CANTILEVER RACKING SYSTEM (LIGHT TO HEAVY DUTY)



Cantilever racking is primarily used for storage of bulky, oversized, and long loads such as timber, plasterboard, steel trusses & piping, PVC carpet.

Client Guide:

- Ideal for long loads, or loads of varying length
- Ideal for bulky or awkward shaped items

Advantages:

- Improving productivity as stock is more accessible
- Can store products of all shapes and sizes, from pallets to long loads
- Accommodates long and bulky items that are hard to store on other type of racking
- One arm alone can carry as high as 300 kg

MEZZANINE RACKING SUPPORTED SYSTEM (UP TO HEAVY DUTY)



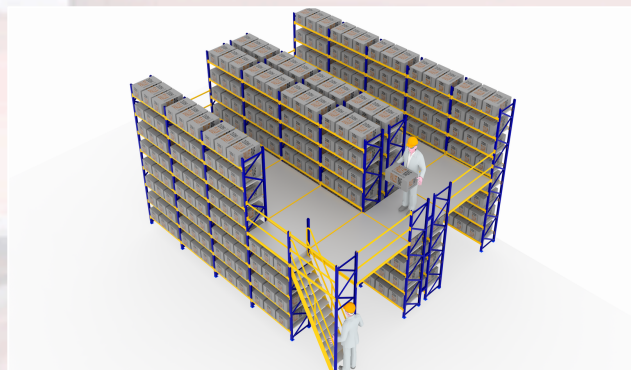
It's a high rise racking system in which specific number of floors is provided as access in loading and retrieving of goods in every shelves level to the and from the racking. Stair is commonly used as access from one floor to another. It's a racking system that will multiply the available floor space by creating more floors to utilize the vertical height of the area all the way to the ceiling.

Client Guide:

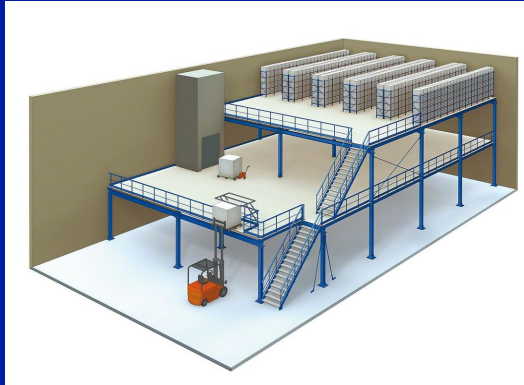
- Ideal for high ceiling area and wanted to maximize the use of the height
- Suitable for storage of small to medium size items which is meant for manual archive or retrieval

Advantages:

- Allow you to use every inch of your space to increase storage capacity
- Most efficient and economical method to create extra floor space within the available area
- Racking shelves can carry up to 2 tons load per level, and the mezzanine floor average load capacity is 150 kg per square meter



MEZZANINE STRUCTURAL SUPPORTED SYSTEM (UP TO HEAVY DUTY)



These are structurally design steel platform with multi-level storage space intended to increase storage space vertically but with minimal number of columns beneath the platform.

Client Guide:

- Ideal for area with unused vertical space

Advantages:

- Fewer columns beneath the platform for wider operational space
- Cost efficient in terms of area utilization
- Its flexibility and adaptability makes it perfect for wide variety of applications
- Can be dismantle and relocate at other place
- Can possibly design up to 1000 kg per square meter load capacity (purposely for heavy goods)

LIGHT DUTY SHELVING (STEEL OR PLYWOOD DECKING)



It's a storage system generally use for light duty items in which items are load and unloaded manually.

Client Guide:

- Ideal for room storage
- Perfect for display of materials
- Best suite for filing of documents

Advantages:

- Cost effective, won't break the budget
- Simple, easy and quick to assemble and dismantle
- Built with flexibility, can be reconfigured to meet new specifications
- 100 kg to 300 kg load capacity per level



CUSTOMIZE STEELWORKS

We are capable of providing custom made racks, its accessories and other steelworks that will perfectly fit to your requirements.



RACKS WITH LUMBER STORAGE



MOVABLE LADDER



RACKS WITH DIVIDER



WORKING TABLE WITH WHEELS



MOVABLE RACKS



STAIRCASE



STAIRCASE



RACKS WITH DIVIDER



RACKS WITH DIVIDER



RACKS WITH DIVIDER



RACKS FOR CONTAINER



SLIDE



RACKS WITH SIDE COVER



PALLET RACKS WITH PICKING SHELVES

GONDOLA/SUPERMARKET SHELVING SYSTEM (LIGHT TO HEAVY DUTY)



END GONDOLA



ISLAND GONDOLA



WALL GONDOLA

Type of Gondola:

- Island Gondola Shelving System (or Double Side)
- End Gondola Shelving System (or End Rack)
- Wall Gondola Shelving System (or Single Side)

Basically, it's a display shelving system (and storage at the same time) commonly used in supermarket, grocery store and convenience store.

All accessories are also available, such as price holder, nameplate, front stopper, and hooks. And the back panel can either be plain steel, perforated steel or steel wire mesh.

Advantages:

- Simple, easy and quick to assemble and dismantle
- Adjustable shelves, perfect for reconfiguration
- With variety of sizes and load capacity

OTHER SUPERMARKET OR CONVENIENCE STORE USED PRODUCTS

We can provide to you variety of supermarket or convenience store used products together with its accessories. More choices for sizes, dimensions, sections and specifications for best fit to your requirements.

CASHIER COUNTER



CASHIER COUNTER



SHOPPING BASKET



SHOPPING BASKET



SHOPPING TROLLEY



SHOPPING TROLLEY



BASKET TROLLEY



OTHER WAREHOUSE STORAGE PRODUCTS

A. WIRE CAGE OR WIRE CONTAINER (UP TO HEAVY DUTY)



B. PLASTIC BINS



C. PALLETS (PLASTIC OR WOODEN)



OTHER SERVICES

• Racking Inspection

Warehouses' with a storage racking system is a working system that has to be inspected at least once a year by an independent racking inspector with technical expertise on the system. This is to avoid personal injuries and damaged goods. Let your racking be inspected.

• Racking Installation

It is advisable to let a highly experienced personnel's to assemble the racking system in order to meet high quality standards installation. This is to avoid future damage to the system, which will result to failure and may threat life and property. Let us handle it.

• Racking Dismantling

Proper dismantling of the racking system is highly needed to avoid any accident and damage to the system. Hiring an expert in this service will fast track the work and secure the safeness of the work. Let us do it for you.

• Racking Repair

The racking system may depreciate in time, aside from that it will get damage for many reasons, thus repair is necessary to prevent the system to gradually fail. Remember, this are steel materials and the failures of this is gradual, the steel yield little by little without us noticing it an eventually may lead to collapse. Let us save the system from further damage.

• After Sales Services

Our line is always open for any advise needed once the racking system is installed and running. And, we provide all support necessary during the life of the racking system (*such as additional extensions of racking system, additional/replacement of accessories or components, re-configuration, transfer and the like*). For extended guaranties of the system, let us serve you. Let us take care of it.



>>> We partner, we trust.

VISIT OR CONTACT US AT:

IMISTEEL STORAGE RACK TRADING

Office Address:

4B, Cortez Buiding-1, No. 821 EDSA,
Brgy. South Triangle, Quezon City

Mobile Numbers:

0917-1908383 (Globe), 0933-5033797 (Sun)

Phone Number:

(02) 7-585-4800

Official Email:

wepartner@imisteelstorage.com.ph

Official Website:

www.imisteelstorage.com.ph