

## SELECTIVE RACKING SYSTEM (UP TO HEAVY DUTY)



The most widely used racking system for storing palletized loads. The racking system can be placed against the wall (*single deep only*), and rows of back-to-back on succeeding floor spaces after the wall.

### Client Guide:

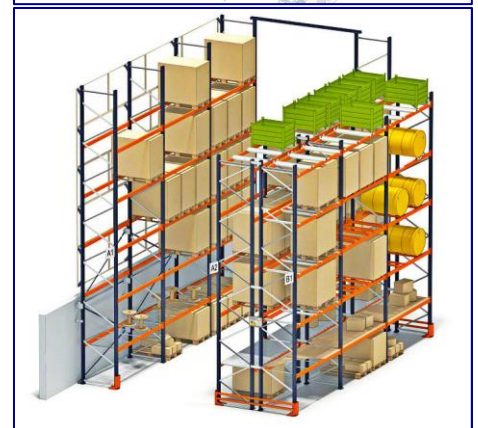
- Suite for low turnover volume and differentiation product lines
- Suite for short life Stock Keeping Units (SKU's), First-In-First-Out
- In terms of operation and cost efficiency, not suitable for high volume storage greater than 3,000 pallets

### Advantages:

- Least expensive among all the pallet racking systems
- Ideal for fast moving operation (*immediate access to every pallet load*)
- 100% pallet selectivity
- Racking load height can exceed 12.0m
- Load capacity per pallet can go as high as 2.5 tons
- First pallet level can rest on ground floor (save cost for bottom beam)

### Aisle Requirement:

- Counter Balance Forklifts, minimum of 3.8 meters
- Reach Truck, minimum of 2.8 meters



## DOUBLE-DEEP RACKING SYSTEM (UP TO HEAVY DUTY)



A derivative of Selective Racking System but pallets is now stored two rows deep instead of one. Loading and unloading is done thru the use of special forklifts with forward reach ability (able to extend its fork) to work for the second-row-pallet.

The racking can be place against the wall (double deep), and two rows back-to-back on succeeding floor spaces after the wall.

### Client Guide:

- Suite for stocks that has medium to long-term shelf life

### Advantages:

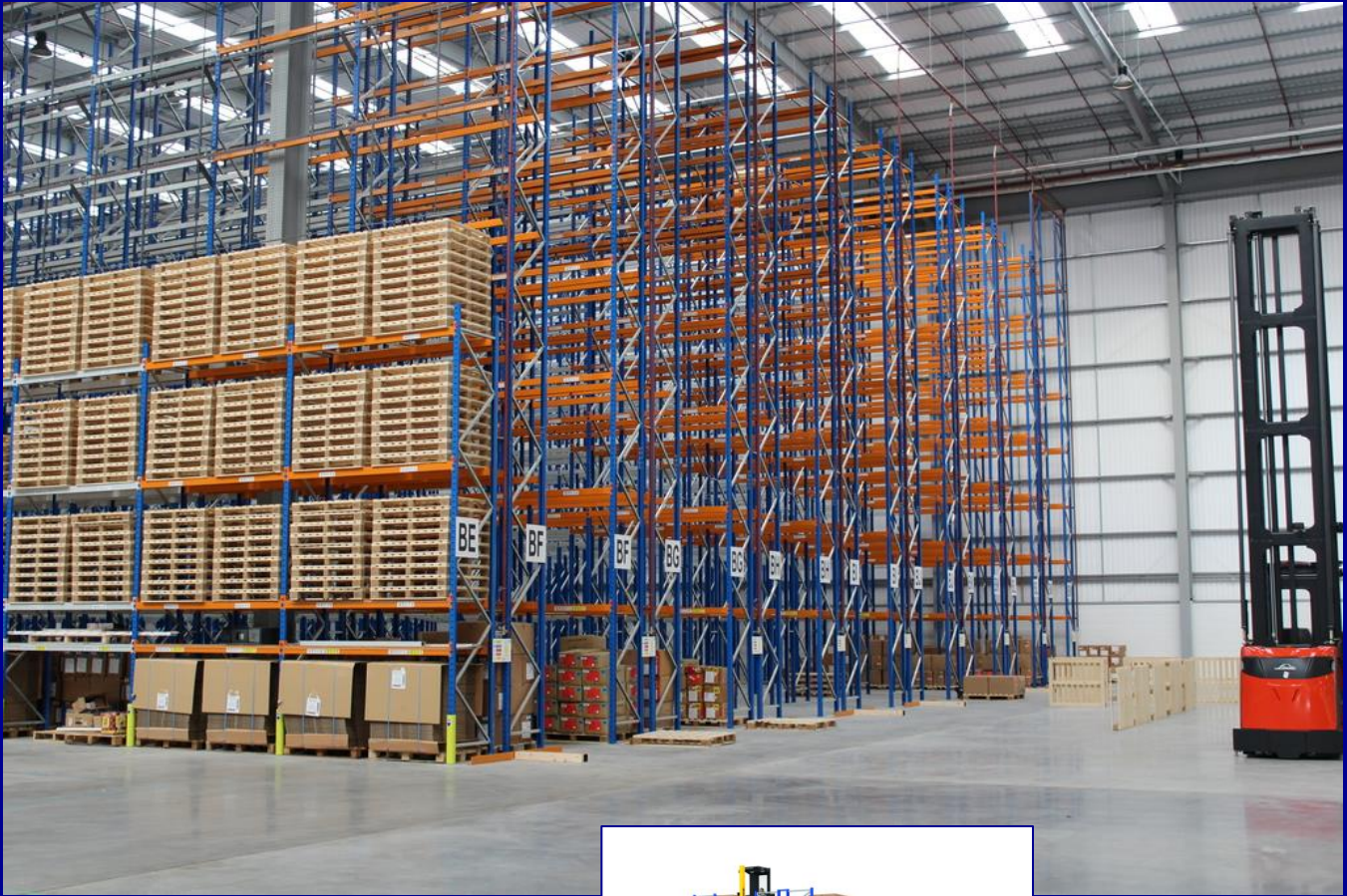
- Up to 40% more storage capacity than Selective Racking System
- 50% pallet selectivity
- Racking load height can reach 12.0 meters (or more)
- Load capacity per pallet can go as high as 1.5 tons

### Aisle Requirement:

- Counter Balance Forklifts, minimum of 3.8 meters
- Reach Truck, minimum of 3.0 meters



## VNA RACKING SYSTEM (VERY NARROW AISLE, UP TO HEAVY DUTY)



A racking system almost similar to Selective Racking System, only that the aisle can be reduced to 1.8 meters. This racking system requires a specialized material handling equipment to load and unload the racks. Since the aisles is narrow, guiderails or electronic guidance systems can be fitted to assist the material handling equipment and protect the structural integrity of the racking.

### Client Guide:

- Suite for high warehouse storage, racking height up to 16.0 meters

### Advantages:

- Provides high density of storage by reducing aisle space to minimum
- 100% of accessibility to control total stocks
- Load capacity per pallet can go as high as 1 ton at 16.0 meters high (can go up to 1.5 tons per pallet at lower level)

### Aisle Requirement:

- Turret Trucks, minimum aisle of 1.6 meters



## DRIVE -IN/DRIVE-THRU RACKING SYSTEM (UP TO HEAVY DUTY)



A most preferred racking solution to conventional block stacking where pallets simply can't be stacked on top of each other. The system involves the forklift entering the racking from one side to load or retrieve the pallets, which are stored more deeply.

### Client Guide:

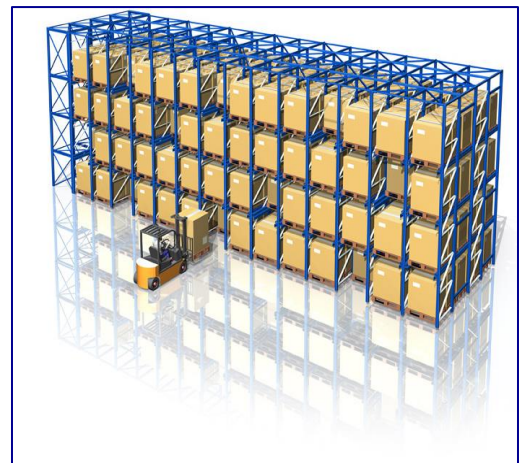
- Suite if you have products that need cold/freezer type storage in order to store more products since its operation is expensive
- Best option for large amounts of similar products at limited space
- *Drive-In Racking System:* This system is perfect for products that are not date sensitive (*Last In, First Out* inventory system)
- *Drive-Thru Racking System:* Perfect for date sensitive products (*First In, first Out*)

### Advantages:

- Provides high density of storage by reducing the number of working aisle
- Three times more storage than the traditional pallet racks
- Load capacity per pallet can go as high as 2 tons

### Aisle Requirement:

- Counter Balance Forklifts, minimum of 3.8 meters
- Reach Truck, minimum of 2.8 meters



## RADIO SHUTTLE RACKING SYSTEM (UP TO HEAVY DUTY)



Radio Shuttle Racking System is a semi-automated high-density storage system, which uses an automatic device to move in back and forth products transportation, and forklift pick-up at the end.

### Client Guide:

- Perfect for cold storage, food and beverage industry by limiting human intervention

### Advantages:

- Efficient and high accuracy in loading and unloading
- Less forklift damage to racks since forklift does not enter inside the racking
- Load capacity per pallet can go as high as 1.5 tons



## MOBILE SHELVING/RACKING SYSTEM

Unlike static shelving or racking that rest on the floor, this system is placed on mobile carriages, which are then attached to floor tracks. This allow the systems to compact together when not in use, eliminating all but one or two aisles standardly in between each row of the system.

### Client Guide:

- For premium facility with lot of product and supplies which need to be stored, easily accessible and secured
- Best option for storing a large amount of products in a limited area of storage

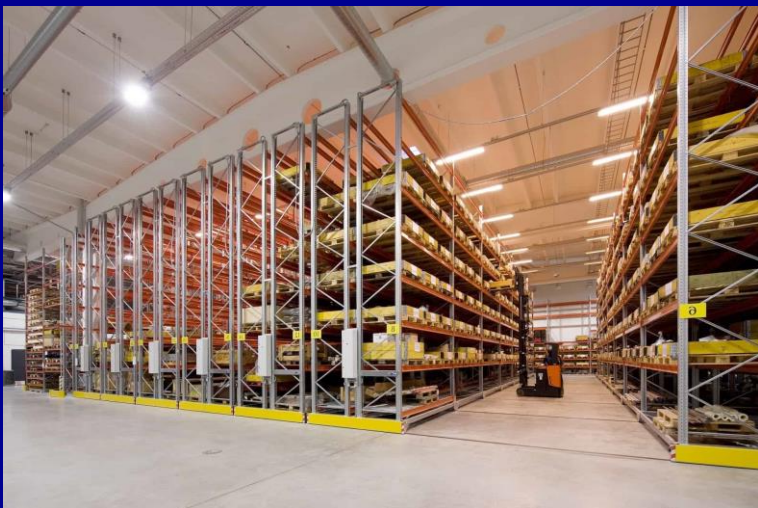
### Advantages:

- Provides high density of storage by limiting the number of working aisle
- 100% of accessibility
- 0.3 -1 .5 tons load capacity
- Save around 50% storage space

### Aisle Requirement:

- *Mobile Racking:* Counter Balance Forklifts, minimum of 3.8 meters
- *Mobile Racking:* Reach Truck, minimum of 2.8 meters

### A. HEAVY DUTY (MOBILE RACKING SYSTEM)



### B. LIGHT DUTY (MOBILE SHELVING)



## PUSH-BACK/PALLET FLOW RACKING SYSTEM (UP TO HEAVY DUTY)



**PUSH BACK**



**PALLET FLOW**

A gravity flow rack that are designed to utilize the natural force of gravity to move the pallet load into picking position so it can be accessed by the forklift operator.

### **Client Guide:**

#### *Push Back*

- Ideal for products that are not date sensitive (*Last In, First Out inventory system*)
- Larger number of SKU's can be efficiently stored

#### *Pallet Flow*

- Ideal for fast moving with First In, First Out stock rotation
- Ideal for date sensitive inventory
- Ideal for full case picking

### **Advantages:**

- Quick, immediate access to every product
- High density storage utilizes warehouse space with fewer aisles
- Average load capacity per pallet 1 ton

### **Racking Pallet Deep:**

#### *Push Back*

- Can able to store up to 6-deep of pallets

#### *Pallet Flow*

- Can able to store up to 20-deep of pallets

## STACKABLE PALLET STEEL SYSTEM (FIXED OR FOLDABLE)



Basically it's a reinforced steel pallet that can be stackable up to 5 high, and the bottom pallet or the base is design to carry load all the way from top pallet.

### Client Guide:

- If wanted to multiply floor stacking and pile up pallet loads by not using permanent/fixed conventional racking
- A pallet stackable system that can be easily knock down and nested if not in use

### Advantages:

- Most flexible industrial storage
- Save floor space by utilizing air space without using conventional racks
- Maximize floor space by bulk storage without damaging your goods
- 0.5 ton to 1 ton load capacity per pallet stacked





## CARTON FLOW RACKING SYSTEM (LIGHT TO HEAVY DUTY)



It is a gravity-powered racking system where the racks are sloped and aided by rollers or wheels. The loading aisle is in the back while the picking aisle is up front. Unlike Pallet Flow Racking System, the products are placed in cartons instead of pallets and slide on rollers to move forward on the picking aisle.

### Client Guide:

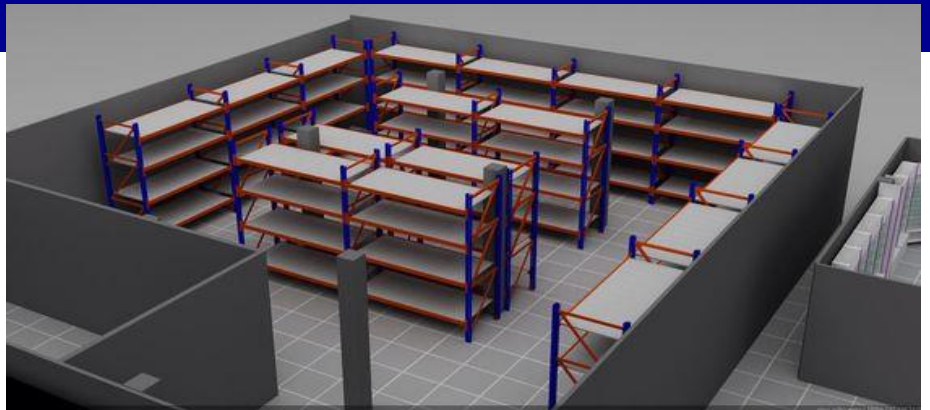
- Work well for warehouses with products of varying kinds and sizes
- Efficient for full case picking or split case picking

### Advantages:

- Increases labor efficiency
- High density storage, less floor space is used
- Ideal for fast moving with First In, First Out stock rotation
- Load capacity per level can go as high as 1 ton



## LONGSPAN RACKING SYSTEM (MEDIUM TO HEAVY DUTY)



It is a storage system for manual picking of products that follow the "man-to-product" principle. It is designed for warehouse where goods are deposited and removed manually from shelves. This system also makes optimal use of warehouse height.

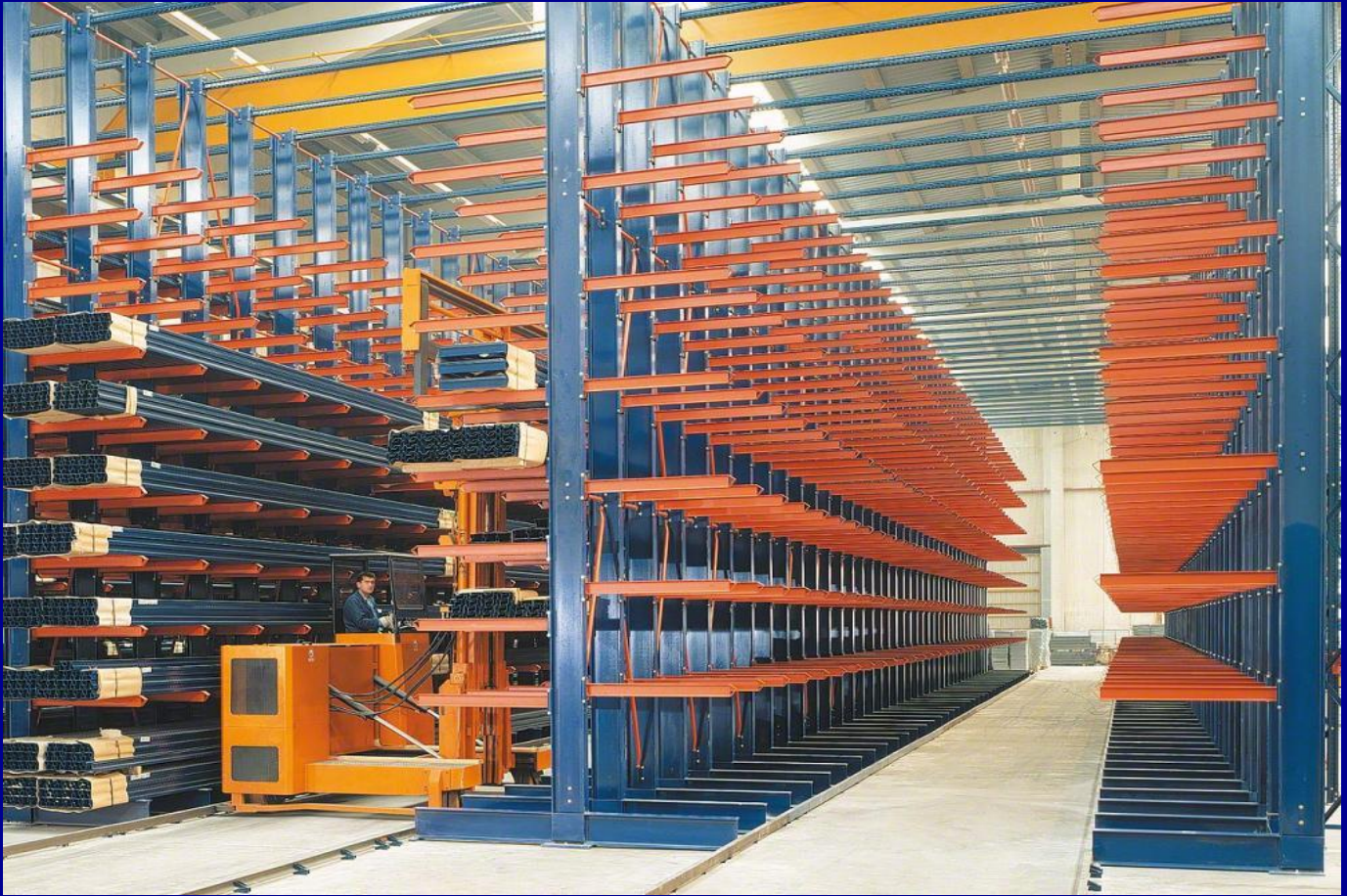
### Client Guide:

- For manual loading and unloading
- Advisable for office storage and low level warehouses

### Advantages:

- Cost efficient, high storage due to minimal aisle width
- Load capacity ranging from 300 kg to 2000 kg per level
- Can maximize storage height with the use of ladder for high level racking
- Pallet is not necessarily needed, instead use plywood, steel or wire mesh for shelf floor

## CANTILEVER RACKING SYSTEM (LIGHT TO HEAVY DUTY)



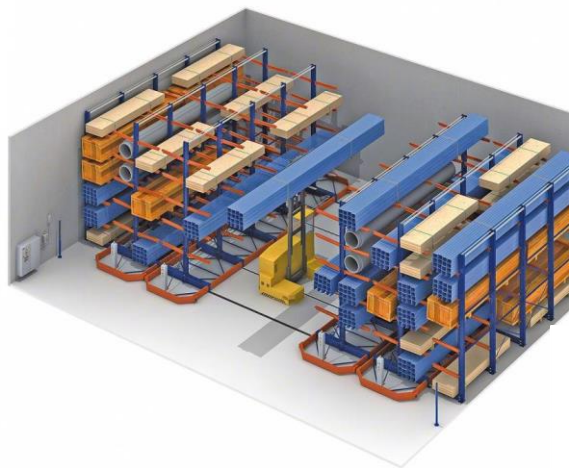
Cantilever racking is primarily used for storage of bulky, oversized, and long loads such as timber, plasterboard, steel trusses & piping, PVC carpet.

### Client Guide:

- Ideal for long loads, or loads of varying length
- Ideal for bulky or awkward shaped items

### Advantages:

- Improving productivity as stock is more accessible
- Can store products of all shapes and sizes, from pallets to long loads
- Accommodates long and bulky items that are hard to store on other type of racking
- One arm alone can carry as high as 300 kg



## MEZZANINE RACKING SUPPORTED SYSTEM (UP TO HEAVY DUTY)



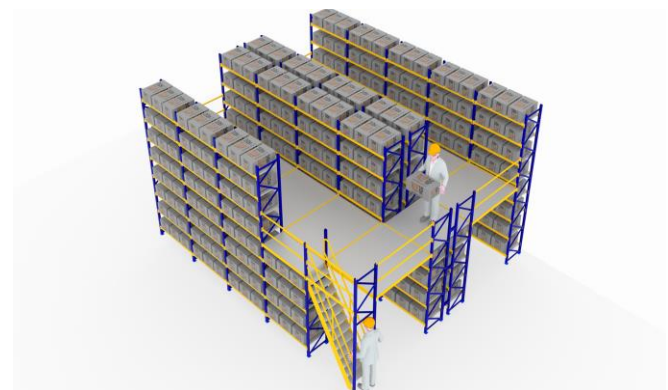
It's a high rise racking system in which specific number of floors is provided as access in loading and retrieving of goods in every shelves level to the and from the racking. Stair is commonly used as access from one floor to another. It's a racking system that will multiply the available floor space by creating more floors to utilize the vertical height of the area all the way to the ceiling.

### Client Guide:

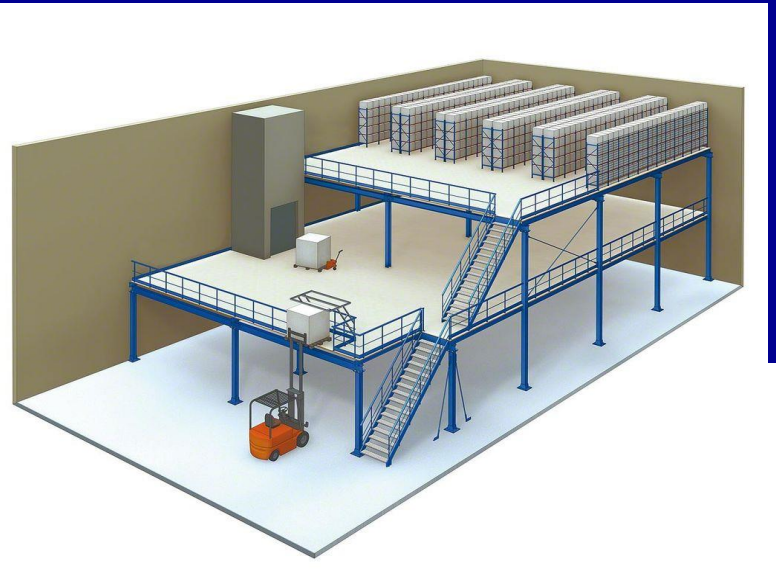
- Ideal for high ceiling area and wanted to maximize the use of the height
- Suitable for storage of small to medium size items which is meant for manual archive or retrieval

### Advantages:

- Allow you to use every inch of your space to increase storage capacity
- Most efficient and economical method to create extra floor space within the available area
- Racking shelves can carry up to 2 tons load per level, and the mezzanine floor average load capacity is 150 kg per square meter



## MEZZANINE STRUCTURAL SUPPORTED SYSTEM (UP TO HEAVY DUTY)



These are structurally design steel platform with multi-level floors intended to increase storage space vertically but with minimal number of columns beneath the platform.

### Client Guide:

- Ideal for area with unused vertical space

### Advantages:

- Fewer columns beneath the platform for wider operational space
- Cost efficient in terms of area utilization
- Its flexibility and adaptability makes it perfect for wide variety of applications
- Can be dismantle and relocate at other place
- Can possibly design up to 1000 kg per square meter load capacity (*purposely for heavy goods*)

## LIGHT DUTY SHELVING (STEEL OR PLYWOOD DECKING)



It's a storage system generally use for light duty items in which items are load and unloaded manually.

### Client Guide:

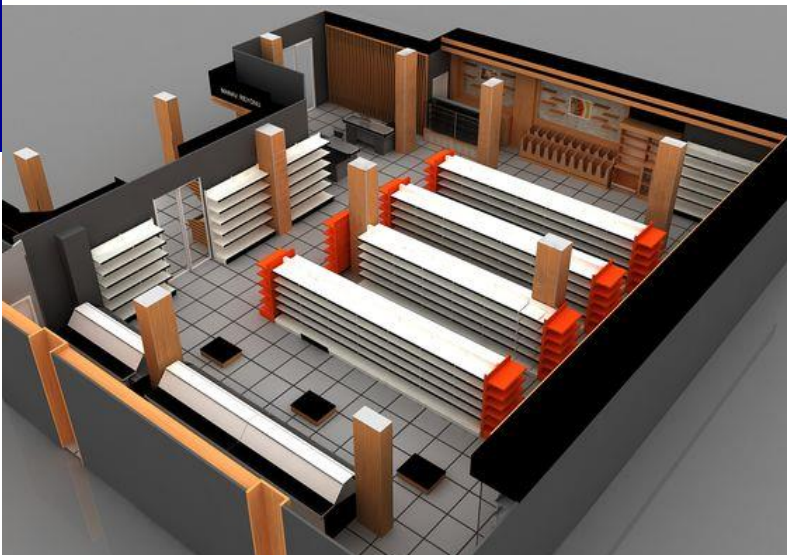
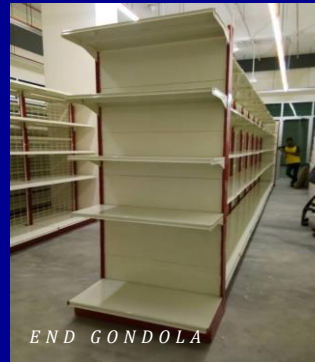
- Ideal for room storage
- Perfect for display of materials
- Best suite for filing of documents

### Advantages:

- Cost effective, won't break the budget
- Simple, easy and quick to assemble and dismantle
- Built with flexibility, can be reconfigured to meet new specifications
- 100 kg to 300 kg load capacity per level



## GONDOLA OR SUPERMARKET SHELVING SYSTEM (LIGHT TO HEAVY DUTY)



Basically, it's a display shelving system (and storage at the same time) commonly used in supermarket, grocery store and convenience

All accessories are also available, such as price holder, nameplate, front stopper, and hooks. And the back panel can either be plain steel, perforated steel or steel wire mesh.

### Advantages:

- Simple, easy and quick to assemble and dismantle
- Adjustable shelves, perfect for reconfiguration
- With variety of sizes and load capacity

### Type of Gondola:

- Island Gondola Shelving System (or Double Side)
- End Gondola Shelving System (or End Rack)
- Wall Gondola Shelving System (or Single Side)

OTHER SUPERMARKET OR CONVENIENCE STORE USED PRODUCTS



We can provide to you variety of supermarket or convenience store used products together with its accessories. More choices for sizes, dimensions, sections and specifications for best fit to your requirements.

SHOPPING BASKET



CASHIER COUNTER



CASHIER COUNTER



SHOPPING BASKET



SHOPPING TROLLEY



SHOPPING TROLLEY



BASKET TROLLEY





## OTHER WAREHOUSE STORAGE USED PRODUCTS

### A. WIRE CAGE OR WIRE CONTAINER (UP TO HEAVY DUTY)



### B. PLASTIC BINS



### C. PALLETS (PLASTIC OR WOODEN)



### CUSTOMIZE STEELWORKS

We are capable of providing custom made racks, its accessories and other steelworks that will perfectly fit to client requirements.



RACKS WITH LUMBER STORAGE



MOVABLE LADDER



RACKS WITH DIVIDER



WORKING TABLE WITH WHEELS



MOVABLE RACKS



STAIRCASE



STAIRCASE



RACKS WITH DIVIDER



RACKS WITH DIVIDER



RACKS WITH DIVIDER



RACKS FOR CONTAINER



SLIDE



RACKS WITH SIDE COVER



PALLET RACKS WITH PICKING SHELVES

## OTHER SERVICES

- **Racking Inspection**

Warehouses' with a storage racking system is a working system that has to be inspected at least once a year by an independent racking inspector with technical expertise on the system. This is to avoid personal injuries and damaged goods.

Let your racking be inspected.

- **Racking Installation**

It is advisable to let a highly experienced personnel's to assemble the racking system in order to meet high quality standards installation. This is to avoid future damage to the system, which will result to failure and may threat life and property.

Let us handle it.

- **Racking Dismantling**

Proper dismantling of the racking system is highly needed to avoid any accident and damage to the system. Hiring an expert in this service will fast track the work and secure the safeness of the work.

Let us do it for you.

- **Racking Repair**

The racking system may depreciate in time, aside from that it will get damage for many reasons, thus repair is necessary to prevent the system to gradually fail. Remember, this are steel materials and the failures of this is gradual, the steel yield little by little without us noticing it an eventually may lead to collapse.

Let us save the system from further damage.

- **After Sales Services**

Our line is always open for any advise needed once the racking system is installed and running. And, we provide all support necessary during the life of the racking system (*such as additional extensions of racking system, additional/replacement of accessories or components, re-configuration, transfer and the like*). For extended guaranties of the system, let us serve you.

Let us take care of it.

